



# AVISCERA BIOSCIENCE

## Rabbit Anti-CTRP11 (Human, Mouse) IgG

Catalog Code	A00380-11-100
Name	Anti CTRP11 (Human,Mouse) IgG
Size	100 µg
Host	Rabbit
Antigen	CTRP11 GF (H,M) rec
Antibody	Polyclonal IgG
Purification	Protein A
Formulation	Lyophilized powder
Application	WB, IHC, E

### Preparation

This antibody was produced from a rabbit immunized with purified recombinant mouse /human CTRP11, globular form. That was purified by Protein A affinity.

### Formulation

100 µg of rabbit Anti- CTRP11 (Human, Mouse) IgG in 100 µl of PBS without preservatives in lyophilized form.

### Reconstitution

Add 100 µl of PBS to the vial to prepare antibody stock solution at 50 µg/50 µl. Store reconstituted antibody at 2 to 8 ° C for up a few weeks. This antibody can also be aliquotted ( by 10 µL per vial) and stored frozen at -20° C to -70° C **in a manual defrost freezer** for up six months without detectable loss of activity.

### Storage

This lyophilized antibody can be stored at 4 ° C for a few weeks. It can be stored frozen at -20° C to -70° C **in a manual defrost freezer** for up six months without detectable loss of activity.

### Specificity

This antibody has been selected for its ability to recognize mouse/human CTRP11 on indirect ELISA, immunohistochemistry and western blot.

### Applications

**Indirect ELISA** - This antibody can be used at 0.25 µg /mL with the appropriate secondary reagents to detect recombinant mouse/human CTRP11 globular form.

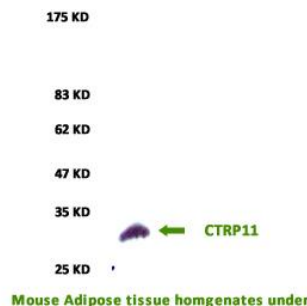
**Immunohistochemistry**-That Antibody can be used at 2-4 µg/ml with the appropriate secondary antibody to detect CTRP11 in mouse and rat paraffin embedded visceral adipose tissues (ABC).

**Western Blot**-That Antibody can be used at 2-4 µg/ml with the appropriate secondary antibody to detect CTRP11 in mouse the homogenates of visceral adipose tissues under reduced condition. The positive band is at ~ 29 KDa.

*Optimal dilutions should be determined by each laboratory for each application.*

### Anti CTRP11 (Human, Mouse) IgG

A00380-11-100



AVISCERA BIOSCIENCE, INC

2348 Walsh Ave., Suite C  
Santa Clara, CA 94085  
USA  
Tel: (408) 982 0300  
Fax: (408) 982 0301

[Info@AvisceraBioscience.com](mailto:Info@AvisceraBioscience.com)  
[Sales@AvisceraBioscience.com](mailto:Sales@AvisceraBioscience.com)

[www.AvisceraBioscience.com](http://www.AvisceraBioscience.com)  
[www.AvisceraBioscience.net](http://www.AvisceraBioscience.net)